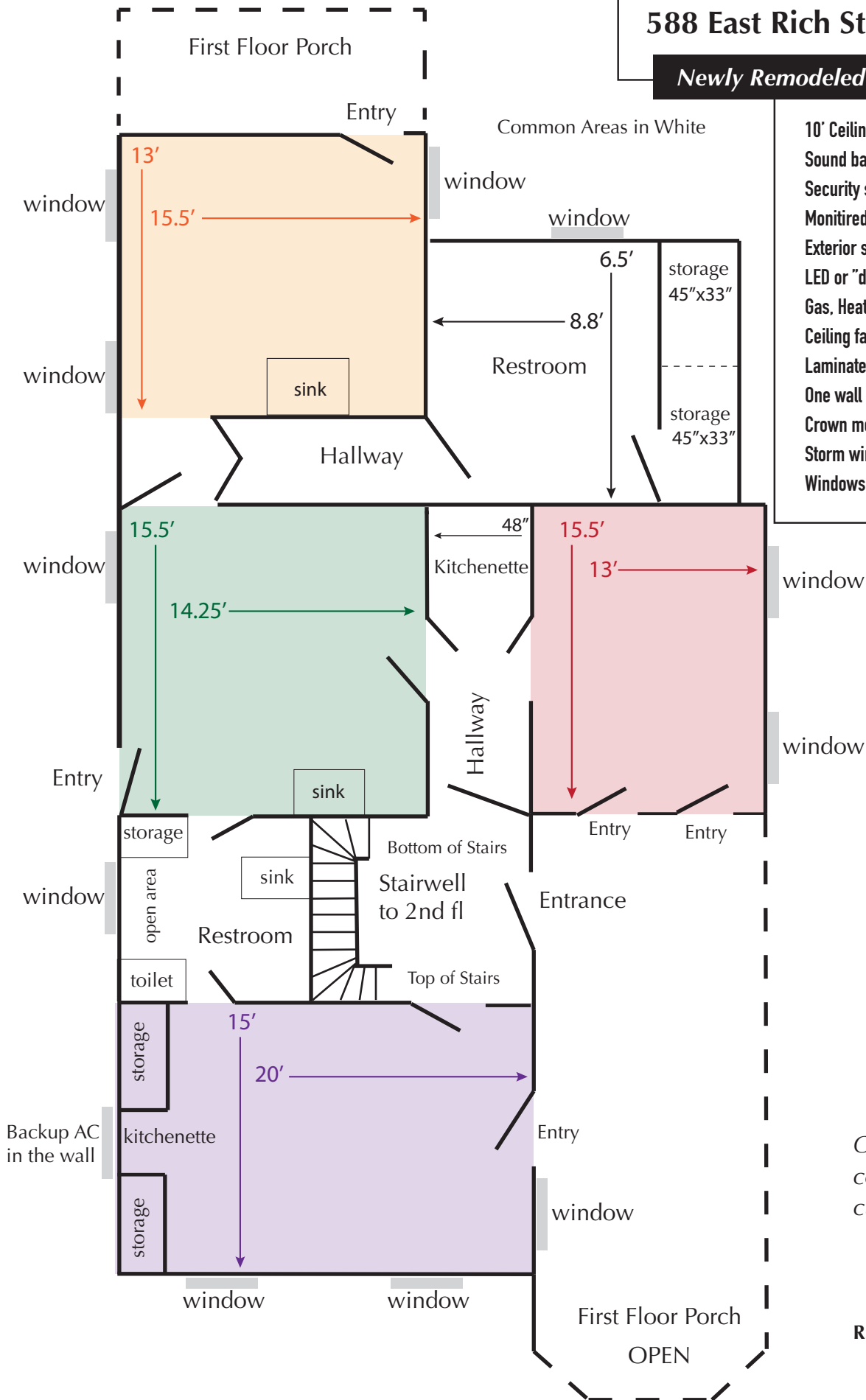


588 East Rich Street - 1st Floor

Newly Remodeled



- 10' Ceilings
- Sound barrier insulation in the ceilings
- Security system
- Monitored smoke detectors
- Exterior security cameras on all 4 sides
- LED or "daylite" fluorescent ceiling lites
- Gas, Heat & AC Thermostat
- Ceiling fans
- Laminate flooring
- One wall of exposed brick in every room
- Crown molding
- Storm windows
- Windows in all exit doors

Office spaces can be combined to fit your customized needs.

R.W. Tinker & Associates